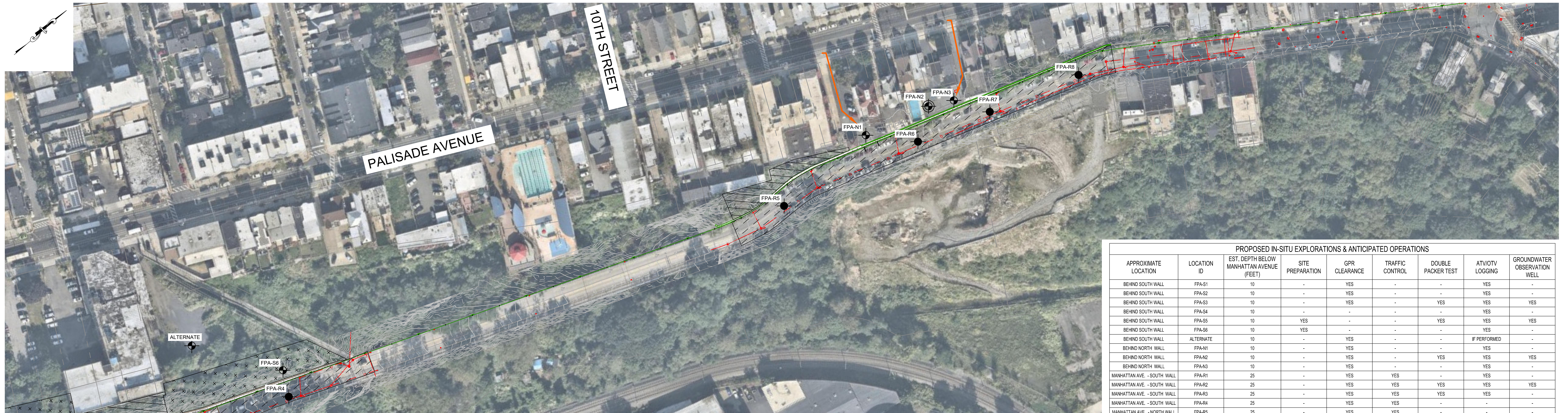




**A OVERALL - SOUTH WALL**  
SHEET 1 SCALE (FEET)



**B OVERALL - NORTH WALL**  
SHEET 1 SCALE (FEET)

LEGEND	
	FPA-S2 BORING NUMBER & LOCATION BEHIND WALL TO 10' (MIN.) BELOW MANHATTAN AVENUE
	FPA-S3 BORING NUMBER & LOCATION BEHIND WALL WITH DOUBLE PACKER TEST, & GW OBSERVATION WELL TO 10' (MIN.) BELOW MANHATTAN AVENUE
	FPA-R1 BORING NUMBER & LOCATION IN ROADWAY WITH 3" PAVEMENT CORE TO 25' (MIN.) BELOW MANHATTAN AVENUE
	FPA-R2 BORING NUMBER & LOCATION IN ROADWAY WITH 3" PAVEMENT CORE, DOUBLE PACKER TEST, & GW OBSERVATION WELL (U.O.N.) TO 25' (MIN.) BELOW MANHATTAN AVENUE
	V-1 PREVIOUS BORING (V) OR WALL CORE (H - HORIZONTAL & D - DIAGONAL) NUMBER & LOCATION PERFORMED IN 1986
	APPROXIMATE EXTENTS OF SITE RECONNAISSANCE & BEDROCK MAPPING
	APPROXIMATE EXTENTS OF SURFICIAL GEOPHYSICAL TESTING

- NOTES:**
1. BASE PLAN DEVELOPED FROM EXISTING CONDITIONS DRAWING PREPARED BY FPA PUBLISHED 04-16-2018.
  2. ELEVATIONS REFER TO NORTH AMERICAN VERTICAL DATUM OF 1988 (NAVD88).
  3. FIELD EXPLORATION OPERATIONS WILL BE OBSERVED BY FPA PERSONNEL AND RESPECTIVE SUBCONSULTANTS, AS NEEDED.
  4. THE LOCATIONS WILL BE FIELD LOCATED BASED ON CORRELATION WITH EXISTING SITE FEATURES.
  5. THE LOCATION DESIGNATED AS "ALTERNATE" MAY BE PERFORMED IF LOCATIONS ARE NOT ACCESSIBLE DUE TO CURRENT SITE CONDITIONS OR ACQUISITION OF ACCESS AGREEMENTS WILL SIGNIFICANTLY DELAY THE EXPLORATION PROGRAM.
  6. SOIL COMPOSITE SAMPLES BELOW DGA SHALL BE COLLECTED FOR GEOTECHNICAL TESTING ALONG BORINGS PERFORMED IN ROADWAY.
  7. THE LOCATION OF PREVIOUS EXPLORATIONS PERFORMED BY OTHERS WERE APPROXIMATED BY SCALING AND OVERLAYING AVAILABLE SKETCHES TO ALIGN WITH SITE FEATURES OF TODAY AND THE TIME OF INITIAL PERFORMANCE.

PROPOSED IN-SITU EXPLORATIONS & ANTICIPATED OPERATIONS								
APPROXIMATE LOCATION	LOCATION ID	EST. DEPTH BELOW MANHATTAN AVENUE (FEET)	SITE PREPARATION	GPR CLEARANCE	TRAFFIC CONTROL	DOUBLE PACKER TEST	ATV/OTV LOGGING	GROUNDWATER OBSERVATION WELL
BEHIND SOUTH WALL	FPA-S1	10	-	YES	-	-	YES	-
BEHIND SOUTH WALL	FPA-S2	10	-	YES	-	-	YES	-
BEHIND SOUTH WALL	FPA-S3	10	-	YES	-	YES	YES	YES
BEHIND SOUTH WALL	FPA-S4	10	-	-	-	-	YES	-
BEHIND SOUTH WALL	FPA-S5	10	YES	-	-	YES	YES	YES
BEHIND SOUTH WALL	FPA-S6	10	YES	-	-	-	YES	-
BEHIND SOUTH WALL	ALTERNATE	10	-	YES	-	-	IF PERFORMED	-
BEHIND NORTH WALL	FPA-N1	10	-	YES	-	-	YES	-
BEHIND NORTH WALL	FPA-N2	10	-	YES	-	YES	YES	YES
BEHIND NORTH WALL	FPA-N3	10	-	YES	-	-	YES	-
MANHATTAN AVE. - SOUTH WALL	FPA-R1	25	-	YES	YES	-	YES	-
MANHATTAN AVE. - SOUTH WALL	FPA-R2	25	-	YES	YES	YES	YES	YES
MANHATTAN AVE. - SOUTH WALL	FPA-R3	25	-	YES	YES	YES	YES	-
MANHATTAN AVE. - SOUTH WALL	FPA-R4	25	-	YES	YES	-	-	-
MANHATTAN AVE. - NORTH WALL	FPA-R5	25	-	YES	YES	-	-	-
MANHATTAN AVE. - NORTH WALL	FPA-R6	25	-	YES	YES	-	-	-
MANHATTAN AVE. - NORTH WALL	FPA-R7	25	-	YES	YES	-	-	-
MANHATTAN AVE. - NORTH WALL	FPA-R8	25	-	YES	YES	-	-	-
<b>TOTAL</b>	17	290	2	14	8	5	12	4
	18 WITH ALTERNATE	300 WITH ALTERNATE		15 WITH ALTERNATE			13 WITH ALTERNATE	

No.	Date	Revision	Revised By	Checked By

**FPA**  
FRENCH & PARRELO ASSOCIATES

Corporate Office:  
1800 RI 34, Suite 101  
Wall, New Jersey 07719  
732.312.8000

FPAengineers.com

New Jersey ▲ New York ▲ Pennsylvania ▲ Georgia

FIELD EXPLORATION LOCATION PLAN FOR RETAINING WALL & SLOPE STABILIZATION ALONG MANHATTAN AVENUE CITY OF UNION CITY, HUDSON COUNTY, NEW JERSEY		
DATE: 03/29/2024	SCALE: AS INDICATED	PROJECT NUMBER: 12277.003
DRAWN BY: ESM	CHECKED BY: SAT	DRAWING NO.: 2

C:\V2K\12200\12277 - NJPA Manhattan Avenue Retaining Wall\12277.003 Slope And Wall Design (FE Phase)\DOCS\Design\_Tasks\Geotechnical\Draws\BID\BID\_Proposed.dwg 3-ACCESS